

# T2-04

Up to 7.5 LPM Free Flow



## Mini Pumps (air/gas)

The T2-04 is a twin head pump with single set of ports that is ideal for higher suction flows in portable gas sampling systems. A unique double diaphragm design minimizes losses inside the pump. With flows up to 7.5 LPM, the efficiency of this pump is without equal. The motor, pump head, and valve combination provide reliable, long life operation. The pump was designed for higher flow suction applications where low power, small size, and light weight are critical.

### Features

- **High Efficiency**

The double diaphragm and patented valve design have been optimized to provide the highest flowrates available with the lowest power draw, especially in vacuum applications. Low power leads to longer battery life and smaller instrument size.

- **Long Life**

The wear components of these pumps have been designed to provide maximum life while maintaining high efficiency.

- **Small Size and Lightweight**

The pumps fit into the tight spaces demanded of today's battery powered instruments. The lightweight design keeps instrument weight minimized. A single set of barbs provides twice the flow and eliminates tubing 'nests' in the system.

- **Intrinsic Safety Capability**

The high efficiency ironless core motor can satisfy intrinsic safety requirements. It has been proven in applications for sampling of medical gases, hazardous gases, particles, and aerosols in a range of fixed and portable instruments.

### Typical Applications

- Industrial Hygiene
- Medical Instruments
- Air over Liquid Control
- Trace Detection
- Fuel Cells
- Particle & Aerosol Sampling

## Performance Data

### Physical Properties

<b>Operating Environment:</b>
32 to 122°F (0 to 50°C)
<b>Wetted Material:</b>
Neoprene Rubber, Silicone, Polyphthalamide (PPA)

### Electrical

<b>Motor Type:</b>
High Efficiency Ironless Core
<b>Nominal Motor Voltages:</b>
6, 12 VDC
<b>Voltage:</b>
6, 12 VDC (other options available)
<b>Electrical Termination:</b>
5" Wire Leads

### Pneumatic

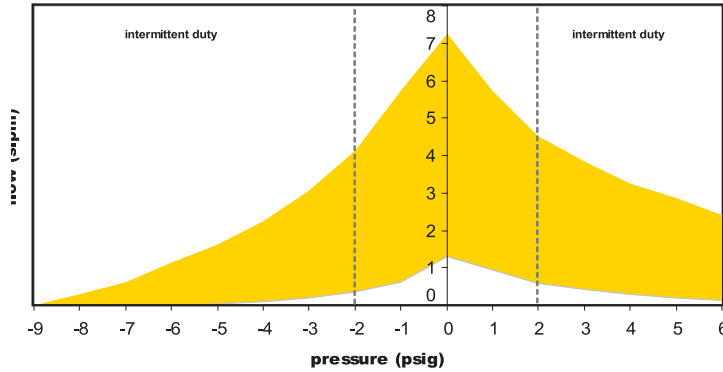
<b>Head Configuration:</b>
Twin
<b>Max Flow:</b>
7.5 lpm
<b>Max Intermittent Pressure:</b>
11.9 psi (820 mbar)
<b>Max Continuous Pressure:</b>
2 psi (138 mbar)
<b>Max Intermittent Vacuum:</b>
17.6 in Hg (596 mbar)
<b>Max Continuous Vacuum:</b>
4 in Hg (138 mbar)

**T2-04**

**Mini Pumps (air/gas)**

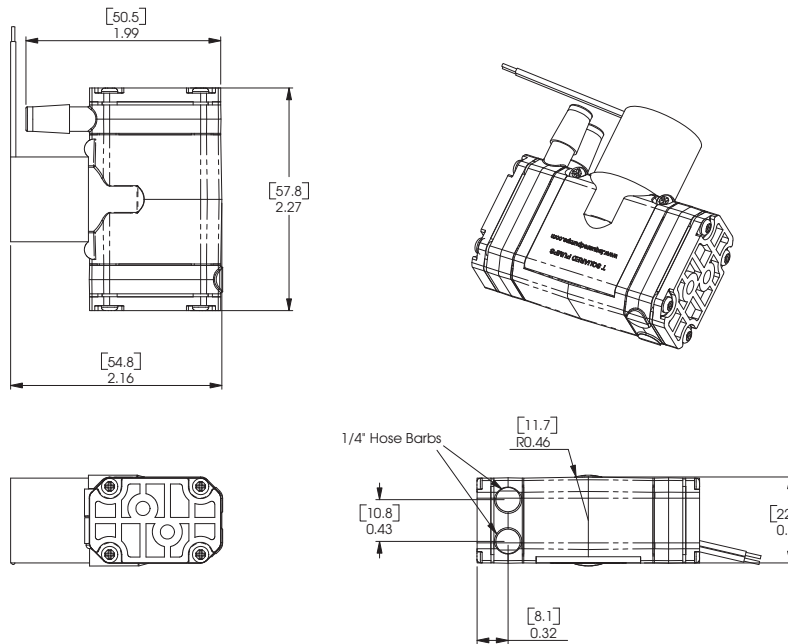
**Typical Flow Curve**

**Flow**



NOTE: All performance data is typical based on standard conditions: 70°F and 14.7 psia

**Dimensions**



ORDER ON-LINE

PPF MDP - 002/US Sept 2009

For more information call 1.800.525.2857 or email [ppfinfo@parker.com](mailto:ppfinfo@parker.com)  
 Visit [www.parker.com/precisionfluidics](http://www.parker.com/precisionfluidics)

